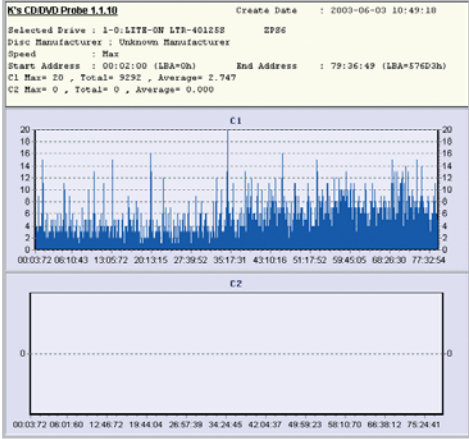
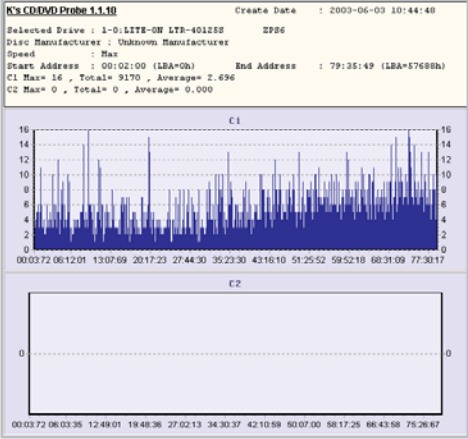
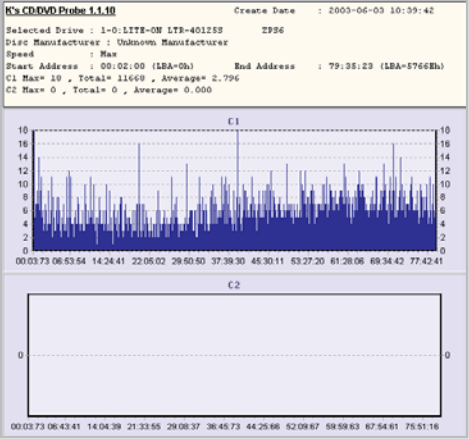


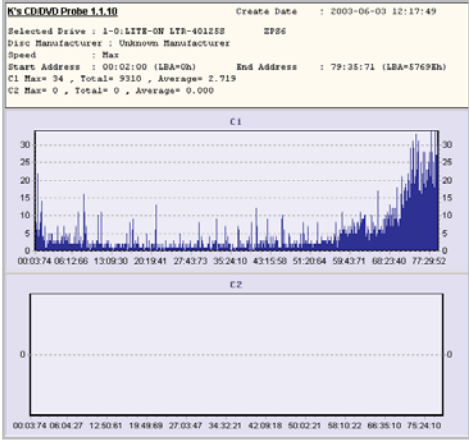
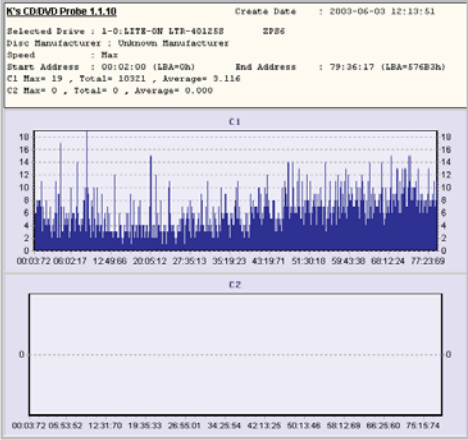
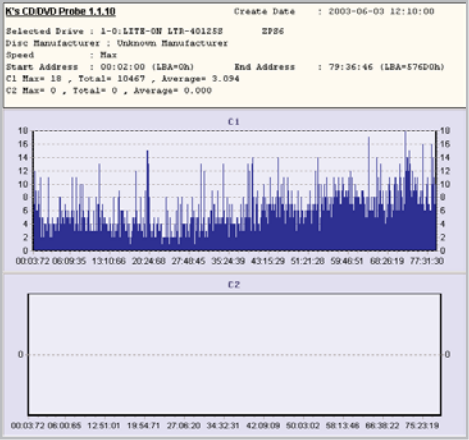
# Wyniki testu jakości

Poniżej zamieszczone są zrzuty z programu K's CD.DVD Probe 1.1.10 zliczającego błędy C1 i C2, który analizował trzy płyty CD-R nagrane z prędkościami 48x i 52x na każdej z testowanych nagrywarek.

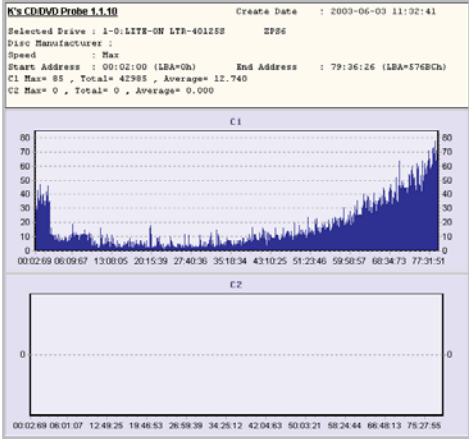
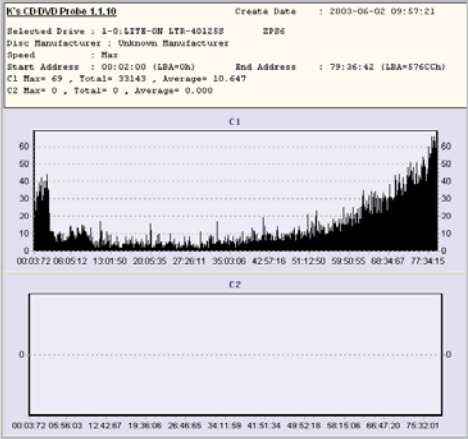
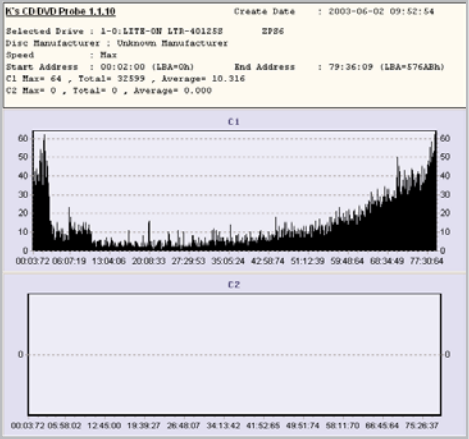
## AOpen CDR5224



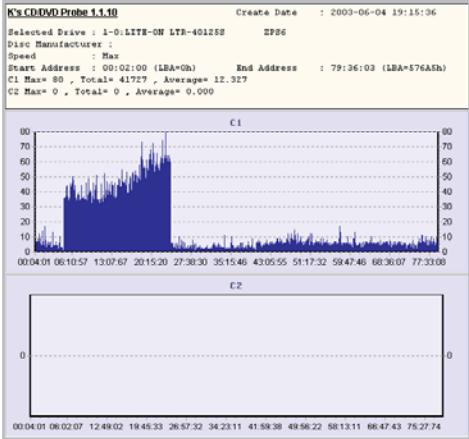
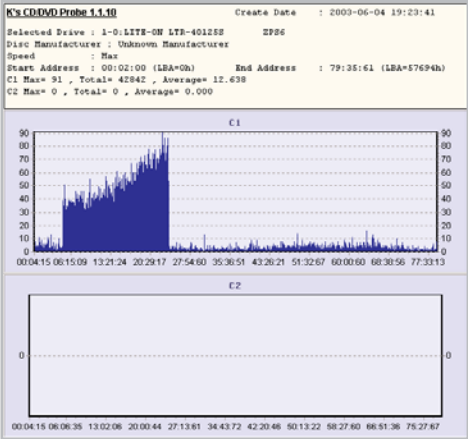
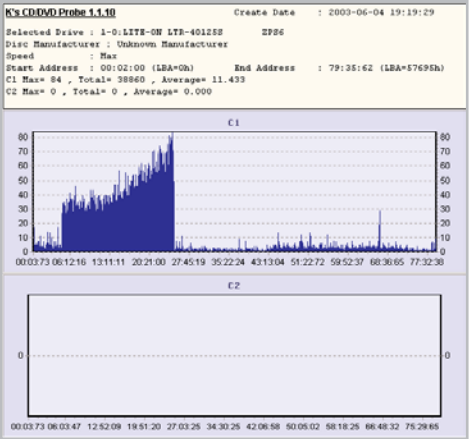
## AOOpen EHW-5224U



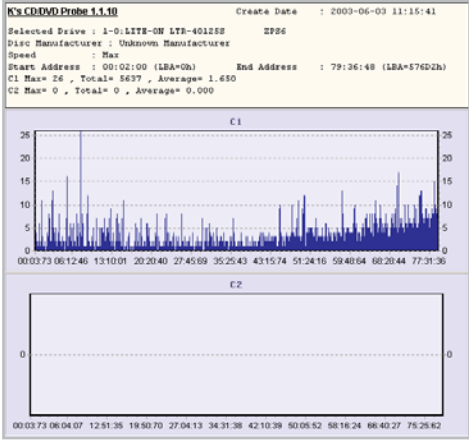
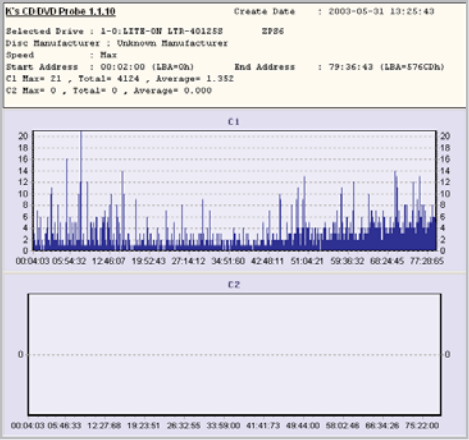
## Asus CRW5224A



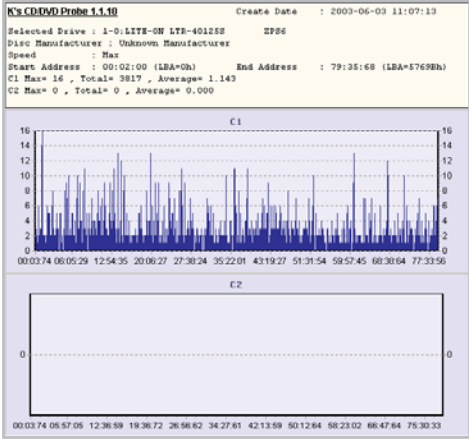
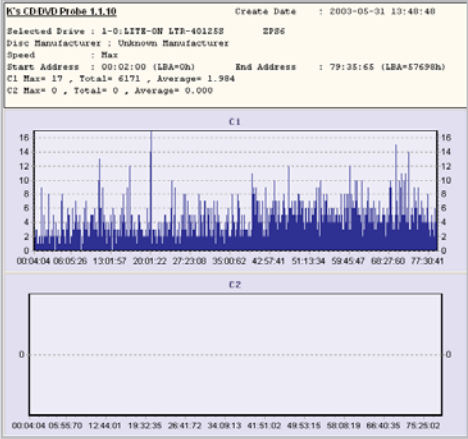
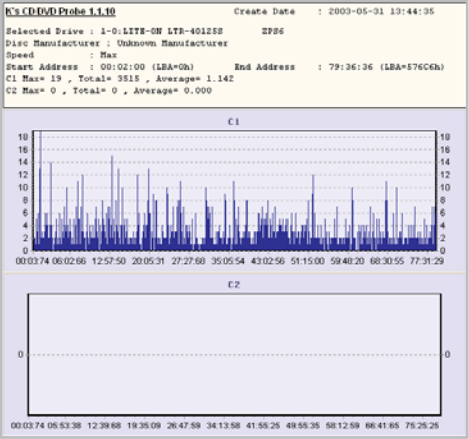
Benq 4816A



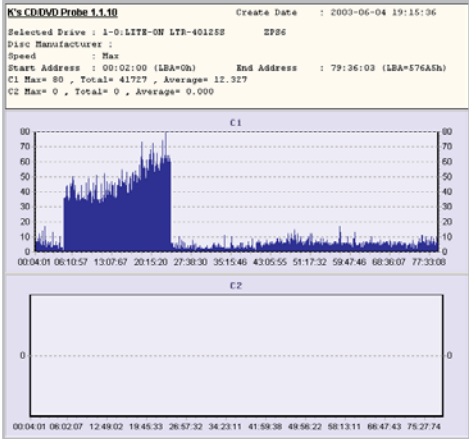
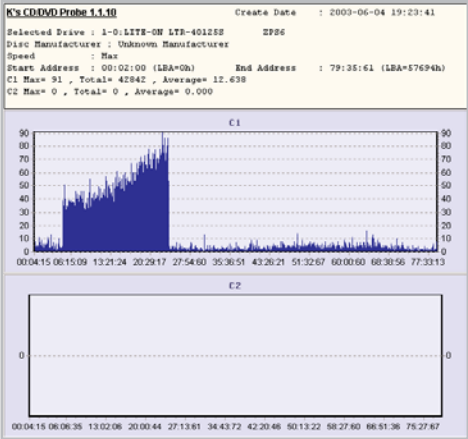
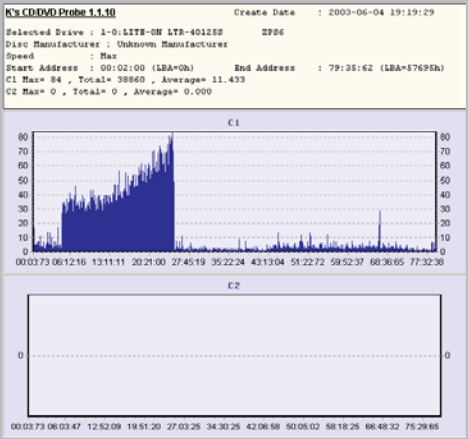
Benq 5224P



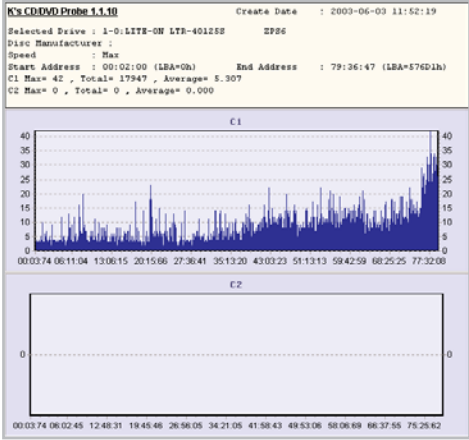
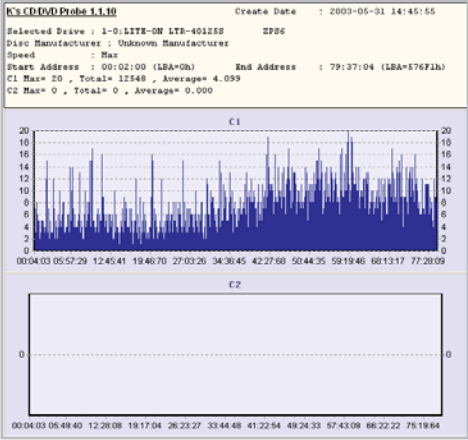
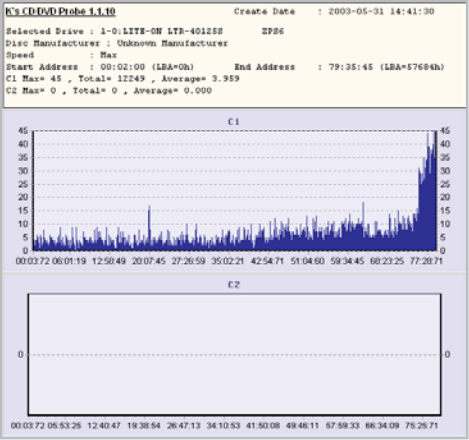
BTC 5224IM



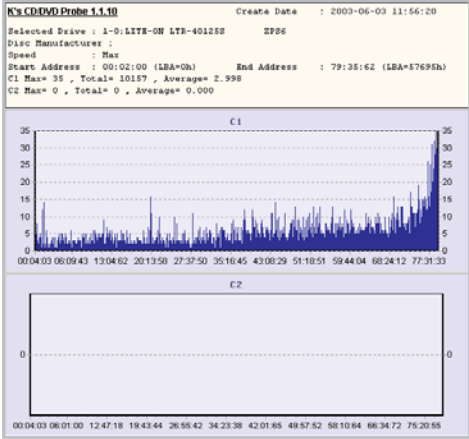
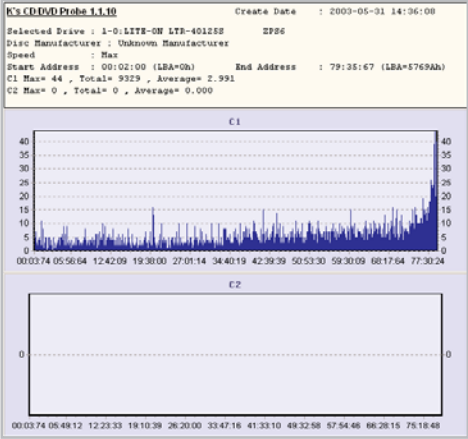
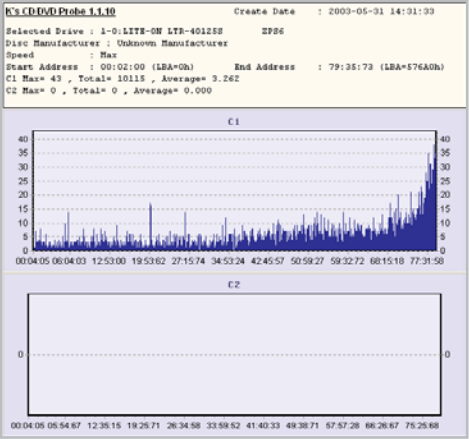
Benq 4816A



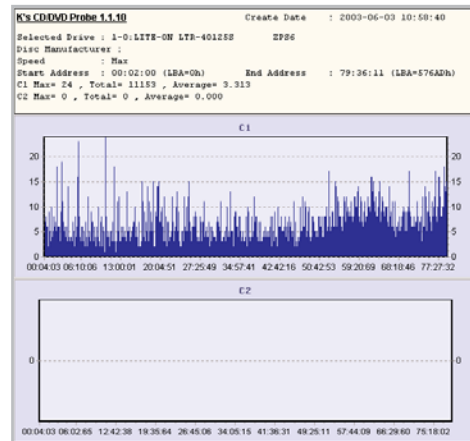
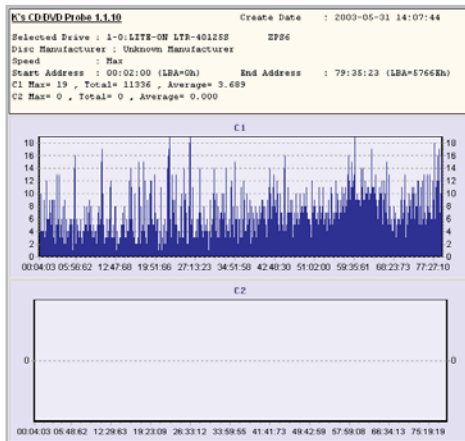
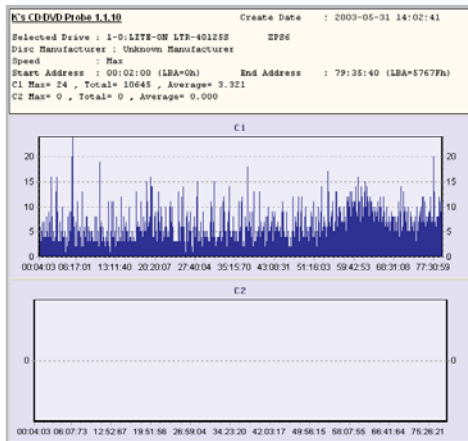
BTC BCE-4816IM



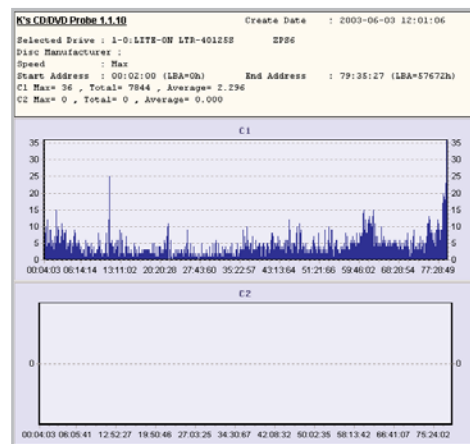
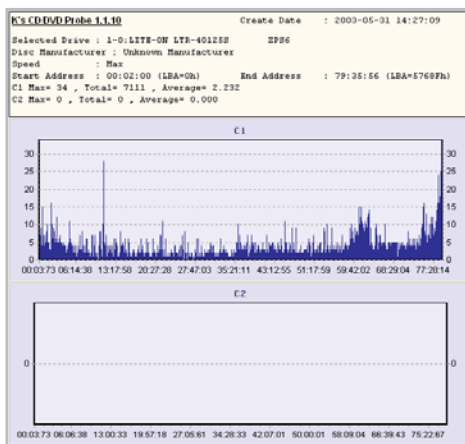
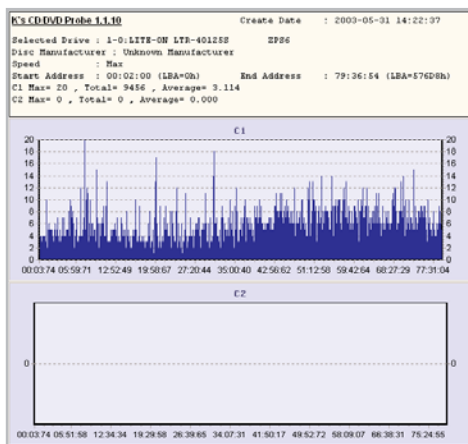
LG GCE-8481B



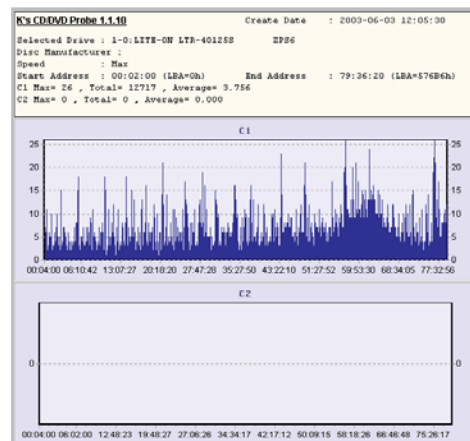
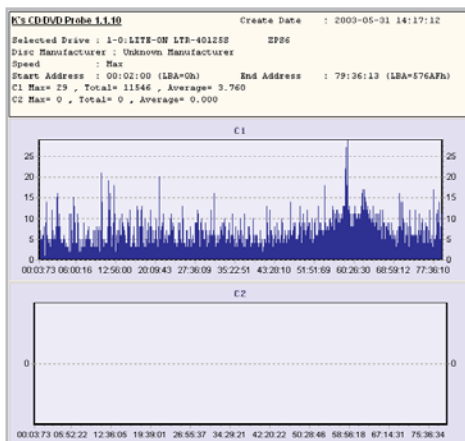
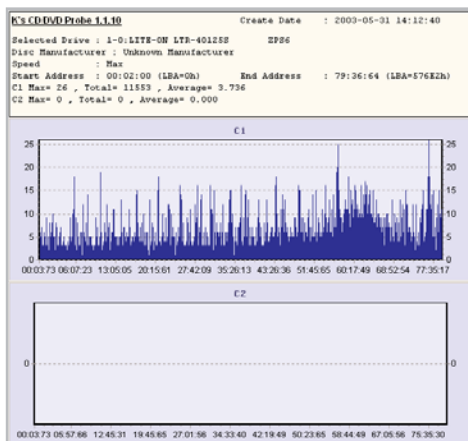
## LG GCE-8520B



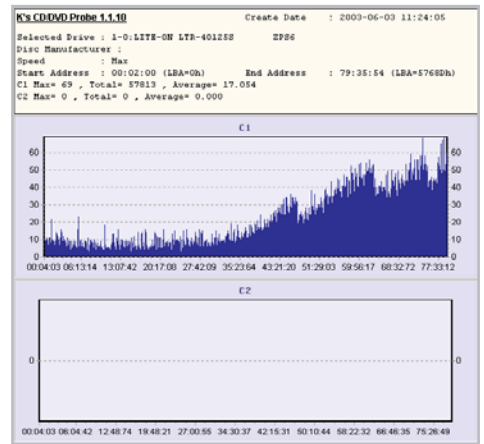
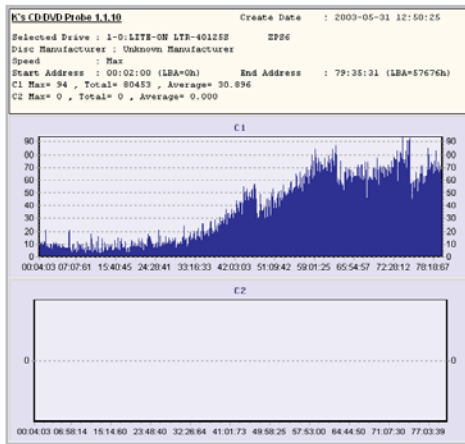
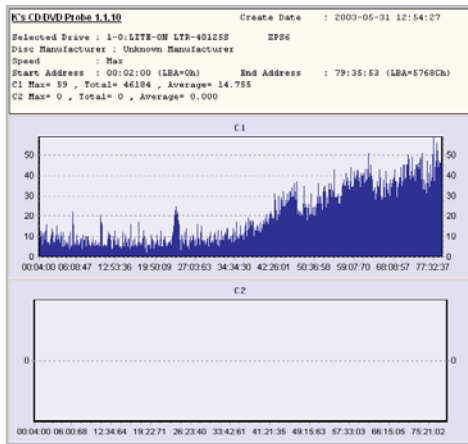
## Liteon LTR-4012SS



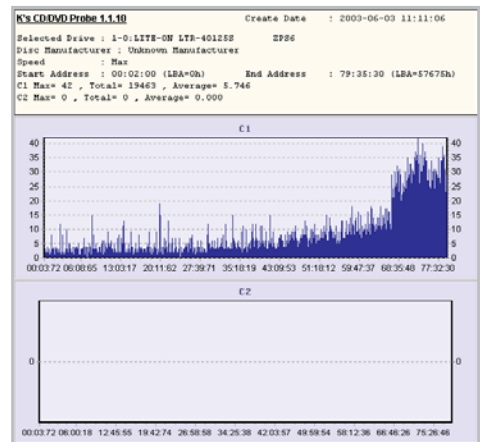
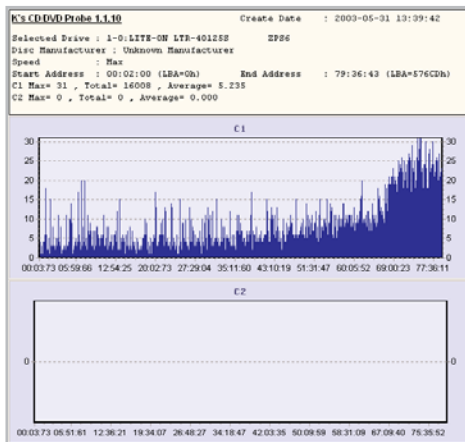
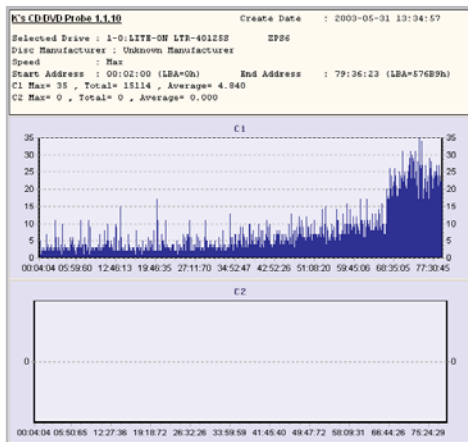
## Liteon LTR-52246S



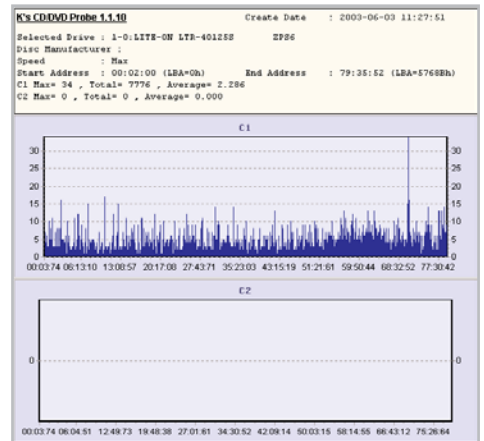
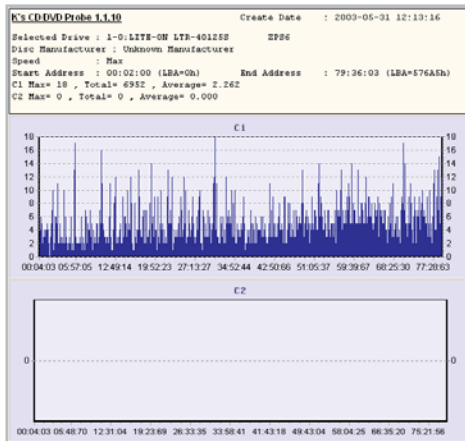
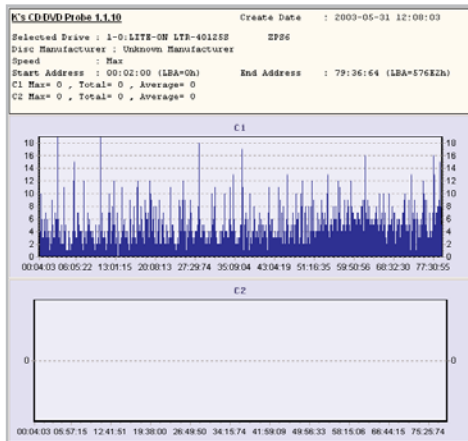
## MSI CR52-A2



## Plextor Plexwriter Premium

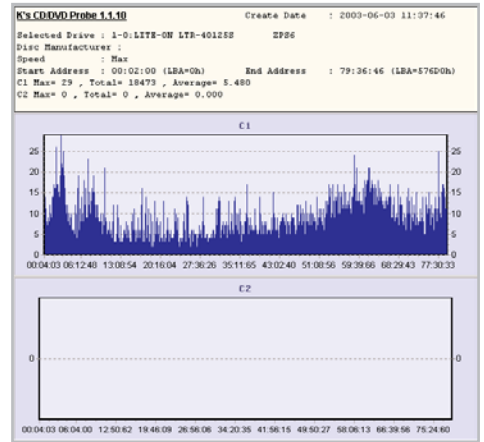
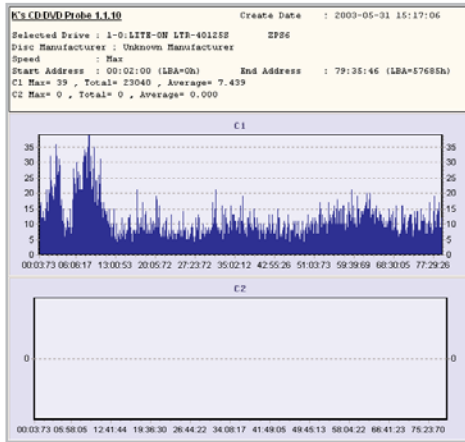
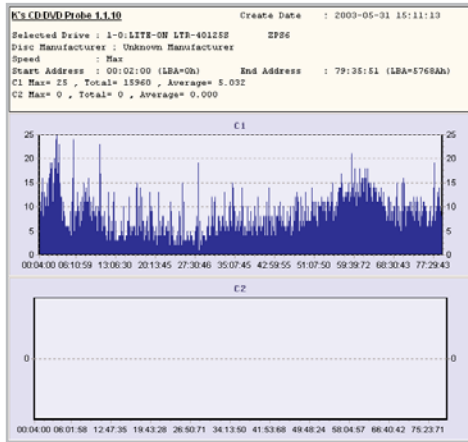


## Plextor Plexwriter PX-W4824TA

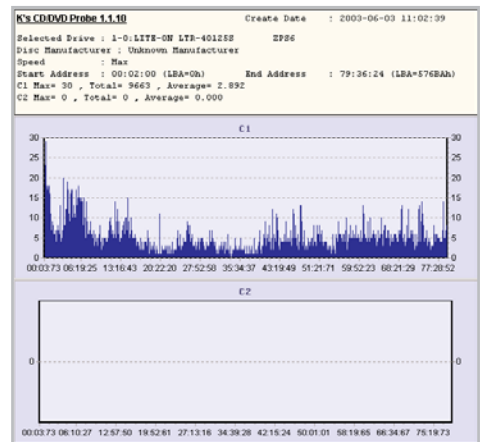
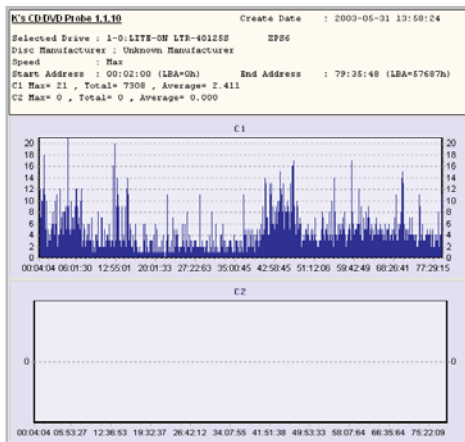
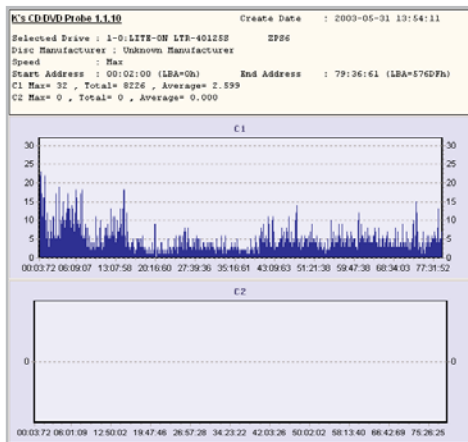




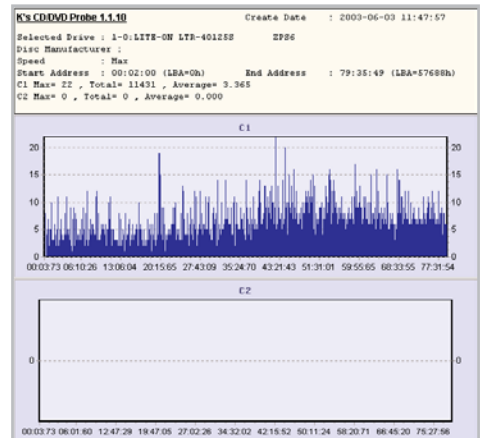
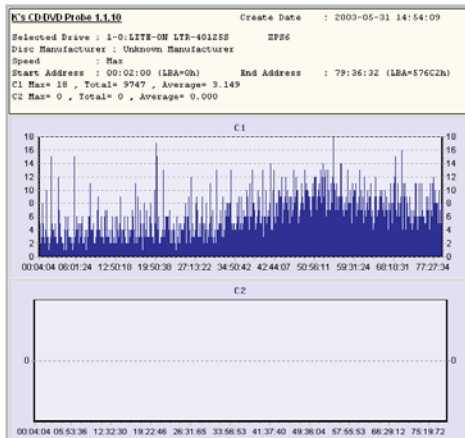
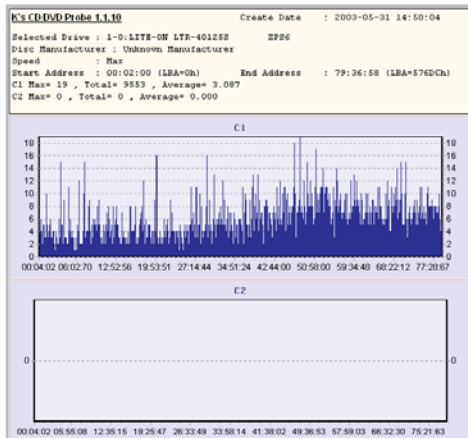
## Samsung SW-248



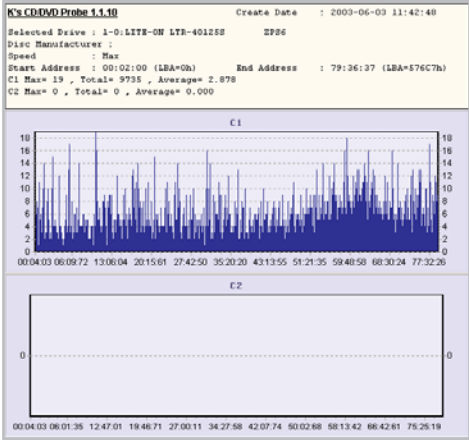
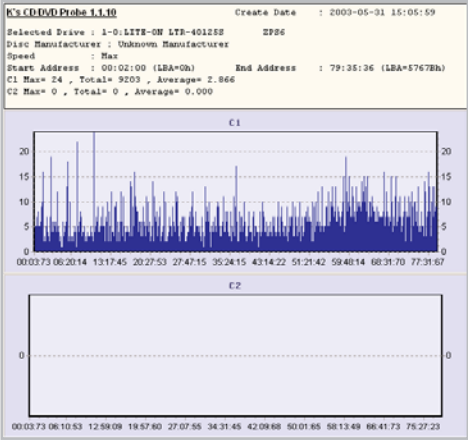
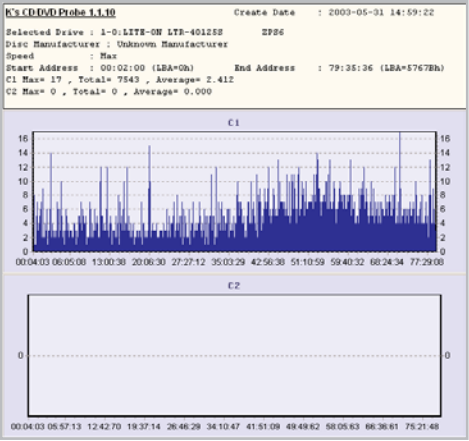
## Samsung SW-252



## Sony CRX210E1



Sony CRX220A1



Teac CR-W522E

